



Roxtec CF 16 EMC-gjennomføring

Gjennomføring for elektromagnetisk skjerming med lavprofilramme.

Roxtec CF 16 EMC er en lavprofils kabelingangstetning som er designet for å opprettholde kabinetts skjermingsytelse. Tetningen bidrar til å beskytte sårbar elektronikk mot elektromagnetiske trusler. Gjennomføringen finnes med en ramme av rustfritt 304-stål eller pulverlakkert stål, samt i versjoner som kan åpnes. Roxtec ES-tetningsmodulene for elektromagnetisk skjerming kan tilpasses kabler av ulike størrelser.



- Lettvekt
- Arealeffektiv
- Godkjent for kabelavslutning

Produktgenskaper



IP/UL NEMA



EMI-beskyttelse

Struktur for installasjon



Kabinetter og kapslinger

Graderinger og sertifikater

Tetthet

- IP 66/67, UL/NEMA 4,4X,12,13

Støtter

- Elektromagnetisk skjerming
- Potensialutjevning

Rammedimensjoner

mm/kg

Rammevariantene nedenfor er et begrenset utvalg. Du kan besøke [roxtec.com](https://www.roxtec.com) for det komplette utvalget av rammer og konfigurasjoner.

Tittel	Rammeåpninger	Fyllplass	Utvendige mål WxHxD	Utsparingsmål w x h	Vekt	Art.nr.
CF 16 EMC	1	40 x 160	93 x 234 x 50	71(+1/-1) x 187(+2/-0.5)	1.7	ECF0000160019
CF 16 EMC AISI304	1	40 x 160	93 x 234 x 50	71(+1/-1) x 187(+2/-0.5)	1.4	ECF0000160021

Tetningskomponentdata

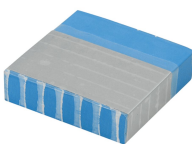
Tetningskomponenter



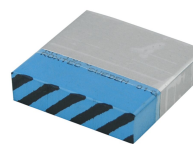
CM ES-modul med Multidiameter™



CM PE-modul med Multidiameter™



CM ES blindmodul



CM PE blindmodul



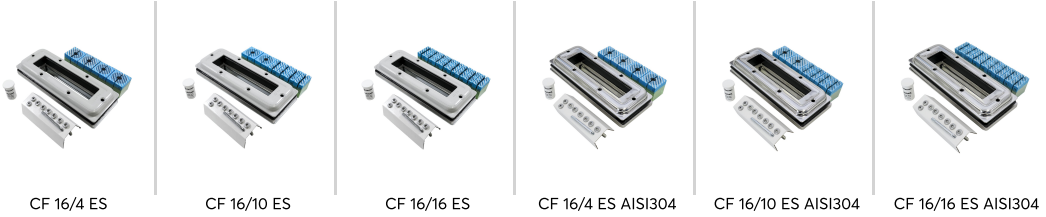
smøremiddel

For ytterligere informasjon, kan du besøke www.roxtec.com.



Forhåndskonfigurerte gjennomføringskit

mm/kg



Tittel	Konfigurasjon	Utvendige mål WxHxD	Utsparingsmål w x h	Vekt	Art.nr.
CF 16/4 ES	4x (9.5-32.5)	93 x 234 x 50	71(+1/-1) x 187(+2/-0.5)	2.1	5CKT000009943
CF 16/10 ES	8x (3.5-16.5), 2x (9.5-32.5)	93 x 234 x 50	71(+1/-1) x 187(+2/-0.5)	2.2	5CKT000009944
CF 16/16 ES	16x (3.5-16.5)	93 x 234 x 50	71(+1/-1) x 187(+2/-0.5)	2.3	5CSF000008585
CF 16/4 ES AISI304	4x (9.5-32.5)	93 x 234 x 50	71(+1/-1) x 187(+2/-0.5)	1.8	197311
CF 16/10 ES AISI304	8x (3.5-16.5), 2x (9.5-32.5)	93 x 234 x 50	71(+1/-1) x 187(+2/-0.5)	1.8	197313
CF 16/16 ES AISI304	16x (3.5-16.5)	93 x 234 x 50	71(+1/-1) x 187(+2/-0.5)	2	197314

The product information provided by Roxtec does not release the purchaser of the Roxtec system, or part thereof, from the obligation to independently determine the suitability of the products for the intended process, installation and/or use.

Roxtec gives no guarantee for the Roxtec system or any part thereof and assumes no liability for any loss or damage whatsoever, whether direct, indirect, consequential, loss of profit or otherwise, occurred or caused by the Roxtec systems or installations containing components not manufactured by an authorized manufacturer and/or occurred or caused by the use of the Roxtec system in a manner or for an application other than for which the Roxtec system was designed or intended.

Roxtec expressly excludes any implied warranties of merchantability and fitness for a particular purpose and all other express or implied representations and warranties provided by statute or common law. User determines suitability of the Roxtec system for intended use and assumes all risk and liability in connection therewith. In no event shall Roxtec be liable for indirect, consequential, punitive, special, exemplary or incidental damages or losses.

The Roxtec products are offered and sold in accordance with the conditions of the Roxtec General Terms of Sales. The latest version of the Roxtec General Terms of Sales can be downloaded from <https://www.roxtec.com/en/about-us/about-roxtec/general-terms-of-sales/>

We reserve the right to make changes to the product and technical information without further notice. Any errors in print or entry are no claims for indemnity. The content of this publication is the property of Roxtec International AB and is protected by copyright.

This document was generated on: 2024-04-05